

Community Update Meeting

Irene Ave. and Linda Ave. Watermain Project



Agenda

- **Introductions**
- **Agenda:**
 - **Background & Status** – Peter Van Heest, MI Dept. EGLE – Remediation & Redevelopment Division
 - **Watermain Project Update** – Kevin Koster, Prein & Newhof
 - **Water System Info** – Lindsay Sagorski Munsell, City of Grand Rapids Water System
 - **Watermain Grant** – Nicole Taubner, MI Dept. EGLE – Drinking Water & Environmental Health Division
- **Q&A**



Background & Status

Peter Van Heest

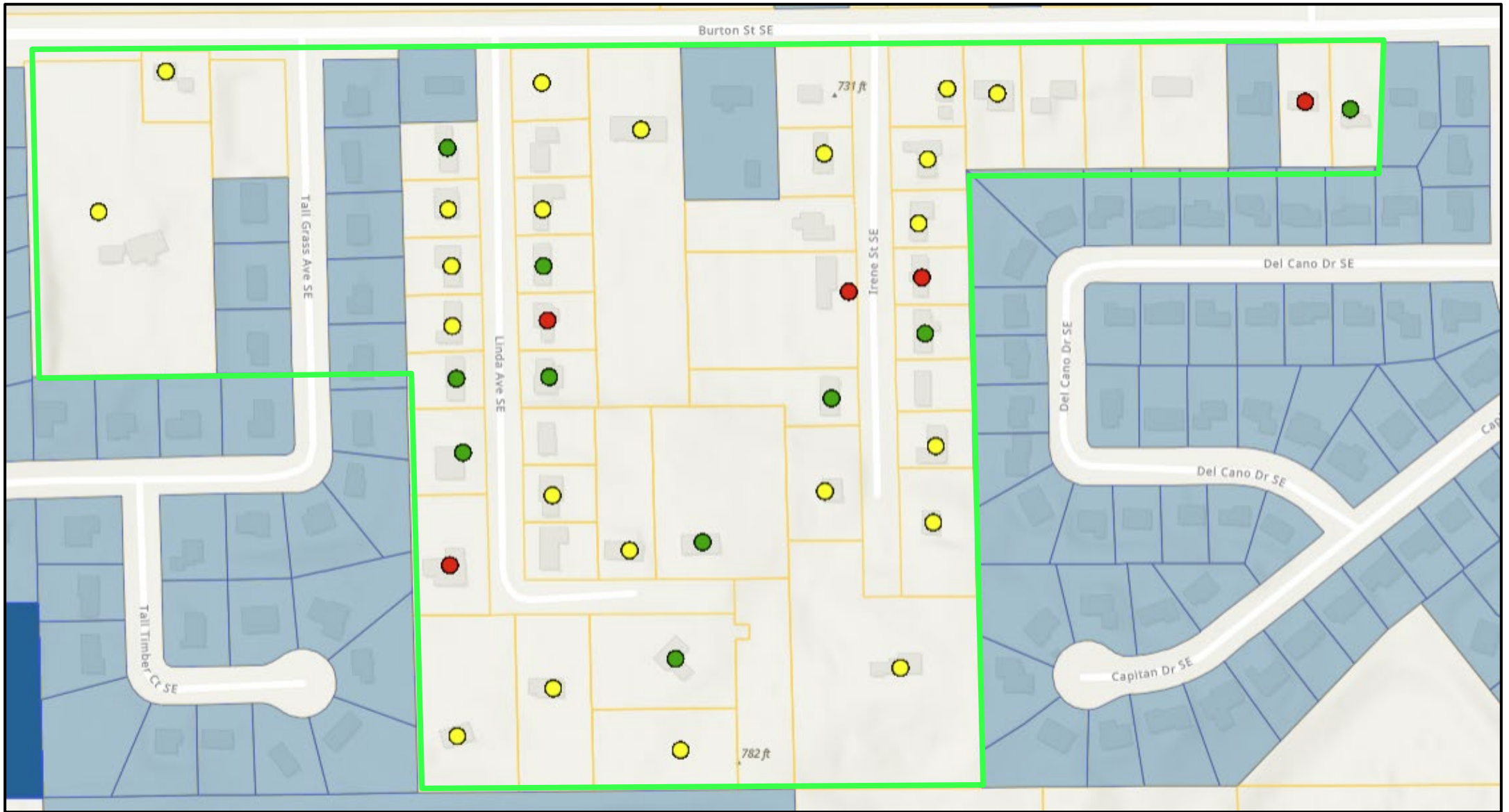
EGLE-Remediation and Redevelopment Division

616-439-8019 | VanHeestP@michigan.gov

Sampling Results

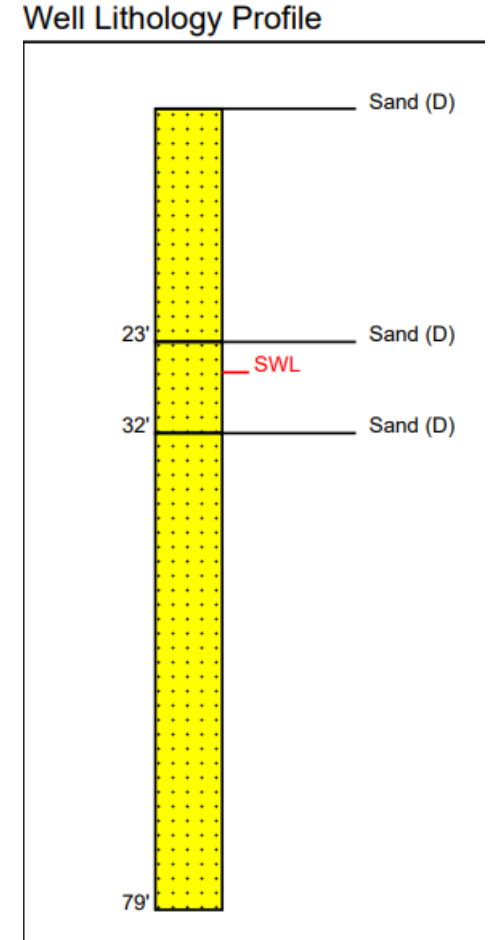
- October 2023 – PFHxS was detected above drinking water criteria in one drinking water well on Irene Ave.
- Early 2024 – EGLE sampled wells at 37 homes nearby.
 - 5 had results above criteria (PFHxS and PFOA)
 - 22 had detections of PFAS compounds below criteria
 - 10 did not detect PFAS compounds
- Any home where PFAS compounds were detected was offered a point-of-use filter by MDHHS and KCHD.





Status

- In September 2025, DHHS resampled wells where homeowners gave permission and got similar results.
- The source of the contamination remains unknown.
- PFAS contamination in this area appears to be widespread.
- It is unknown how the contamination might move within the aquifer with time or changing conditions.
- EGLE has been working to provide a permanent drinking water solution to residents.



Solution

- EGLE awarded a \$2,300,365 grant to the City of Grand Rapids to extend watermains to the Linda and Irene Ave. area and to provide a free connection to city water & abandonment of wells to 48 homes (if homeowners accept).
- **Connection to the watermain will provide a safe and reliable water supply to residents in this neighborhood.**
- Design improvements and obtaining easements have delayed the start of construction, but planning work is actively taking place.





Watermain Design and Construction

Kevin Koster, P.E.

Design and Construction Consulting Engineer

Project Expectations

- Work to begin in the fall of 2026 or spring of 2027.
 - Project may take between 3 and 4 months to complete.
 - Please coordinate with the contract plumber as soon as the connections are available.
- Access for residence and emergency vehicles to be maintained at all times.
 - Residents are encouraged to work with contactor if you have special access needs.
- Mail and trash services will be maintained.

Connection Process

- Earthwork Contractor will install new watermain along the side of the roadway.
- Earthwork contractor will stub new services to curb stop box, which is a valve that allows for services to be shut off if needed.
- New watermain will be pressure tested, chlorinated and sampled for verification that the main is safe for use.



Connection Process Continued

- Once main has passed all required testing, Engineer and the City will sign off that service connections are approved for connection.
- Residents/Homeowners will be provided contact information for plumbing subcontractor. Residents are encouraged to coordinate with plumber ASAP to have a quote specific to your property for connection.
- Engineer and City will review and sign off on quote.
- Plumbing company will coordinate a time with individual homeowners to complete connection from inside home to curb stop box.

What to Expect

- Plumber will coordinate with the homeowner and the City of Grand Rapids to install a meter inside the home that monitors flow.
- Existing well will be disconnected and abandoned.
- Electrical feed to existing well will be disconnected.
- Pressure reducing valve and expansion tank will be installed if needed.
- Irrigation system will be connected to municipal water system.

Restoration

- All driveways and sections of roadway that are removed will be replaced in kind.
- All disturbed yards will be re-graded, topsoil replaced and re-seeded.
- Contractor will be responsible for up to 1 year after work is complete to ensure that restoration of the disturbed areas, including irrigation and any dog fencing systems, has been completed correctly.



Advantages of Looped Watermains

- Improved water quality
- Better system reliability
- More consistent pressure
- Enhanced fire protection
- Reduced need for flushing
- Operational flexibility





GRAND RAPIDS WATER SYSTEM



Lindsay Sagorski Munsell
Assistant Water System Manager
City of Grand Rapids Water System

From Source to Tap

Benefits of Lake Michigan Water

- Very stable
- Ease to treat
- Low turbidity and low organics
- Very low and often non-detectable contaminants like PFAS

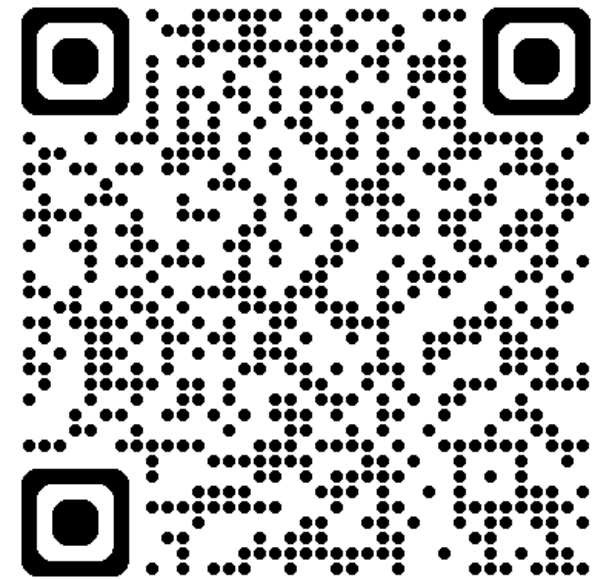


From Source to Tap

Water Quality



2025
WATER
QUALITY
REPORT



grcity.us/water

From Source to Tap

Water Cost



Average household
 32 units / quarter
 23,900 gallons / quarter
 \$136 / quarter
 GR Water: \$.0057 / gallon
 Bottled Water: \$1.16 / gallon



MICHIGAN DEPARTMENT OF
ENVIRONMENT, GREAT LAKES, AND ENERGY

Watermain Grant

Nicole Taubner

EGLE-Drinking Water & Environmental Health Division

517-242- 9992 | TaubnerN@michigan.gov

Why Connect?

- Connection to municipal is a safe option.
- During the grant period, connection and well plugging will be free.
- Additional benefits include avoiding costly repairs or replacement of drinking water wells or having to pay for a connection to city water on your own in the future.
- The addition of fire hydrants to your neighborhood may lower the cost of home insurance premiums.

How to Accept the Connection

- Please sign and return the CONNECTION TO COMMUNITY WATER SUPPLY AGREEMENT /WAIVER that was mailed to you.
- Please make sure you are signing the correct sections (there is a section for declining the offer, so if you want to accept the offer be sure to sign the right line).
- Plugging your existing well is a condition to receive a state-funded service connection.
- Copies are available today if you misplaced it.
- This can be a difficult decision, so please feel free to ask us questions.

The background of the slide features a dynamic water splash. At the top, a wave of water is captured mid-splash, with droplets and ripples. Below this, a horizontal line of water separates the upper splash from the lower section. The bottom half of the slide is filled with numerous small, clear bubbles of varying sizes, some in sharp focus and others blurred, creating a sense of movement and freshness. The overall color palette is a range of blues, from light sky blue to deep cerulean.

Thank You!

We are happy to answer any questions
you may have.

Design Criteria – Why is main located in my yard

- **Existing utilities and congestion** One of the biggest constraints is avoiding conflicts with other private and public utilities.
- **Depth and frost protection** In cold regions like Michigan, mains must be buried below frost depth to prevent freezing.
- **Roadway and right-of-way constraints** Water mains are commonly placed within public right-of-way for access, but final locations are generally dictated by water system operators and roadway maintenance (KCRC)
- **Easements and property impacts** If routing outside the right-of-way, you'll need easements. Minimizing impacts to private property, trees, landscaping, and driveways is usually a priority.
- **Service connections and accessibility** The main should be located where it can easily serve properties:
- **Separation from sanitary sewer** Regulatory standards (often guided by agencies like the Environmental Protection Agency and state/local EGLE rules) require minimum separation distances to protect against contamination.
- In practice, the “best” location is usually the one that avoids utility conflicts, meets separation requirements, supports system hydraulics, and can be built and maintained without excessive cost or disruption.

Why do we need Fire Hydrants

- **Rapid fire suppression** Hydrants give firefighters immediate access to a reliable, high-volume water source, allowing them to respond quickly and control fires before they spread.
- **Improved public safety** Faster and more effective firefighting reduces risk to occupants, neighboring properties, and emergency responders.
- **Lower property damage** With readily available water supply, fires can often be contained sooner, minimizing structural damage and loss.
- **Insurance cost benefits** Areas with well-spaced, properly functioning hydrants often receive better fire protection ratings, which can lead to lower property insurance premiums.
- **Support for system maintenance** Hydrants are used for flushing water mains to remove sediment and maintain water quality, especially in low-flow or dead-end areas.
- **Emergency water access beyond fires** They can be used by public works or emergency crews for street cleaning, construction, or temporary water supply during outages.
- Overall, hydrants are not just for firefighting—they play an important role in maintaining system performance, safety, and regulatory compliance.

Advantages of looped water mains

- **Improved water quality** Dead-end mains tend to have stagnant water, which can lead to sediment buildup, taste/odor issues, and lower disinfectant residuals. Looping keeps water moving, which helps maintain consistent quality.
- **Better system reliability** If a section of water main needs to be shut down for maintenance or breaks, a looped system allows water to be rerouted from another direction. That means fewer service interruptions for customers.
- **More consistent pressure** Looped systems distribute flow more evenly, reducing pressure drops and fluctuations—especially during high demand periods.
- **Enhanced fire protection** -Fire flows are typically higher & more reliable in looped systems because water can reach hydrants from multiple directions, improving volume & pressure.
- **Reduced need for flushing** Dead-end lines often require routine flushing to maintain water quality. Looping minimizes or eliminates many of these maintenance efforts.
- **Operational flexibility** Communities have more options for isolating sections, balancing flows, and managing the system during emergencies or peak usage.