

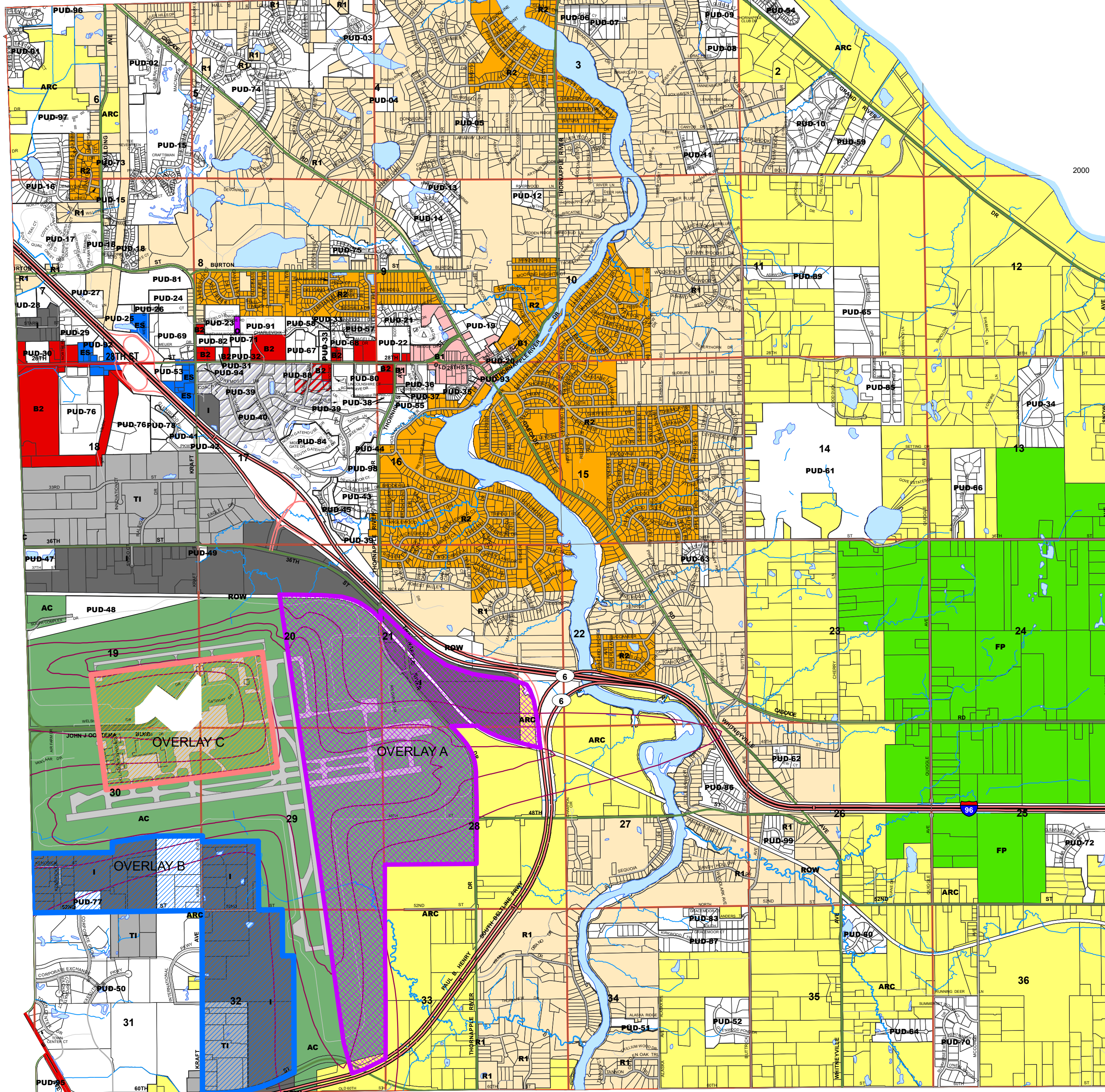
Cascade Charter Township

Official Zoning Ordinance Map

Kent County, Michigan September 2023

ADA TOWNSHIP

1200



Legend

- Airport Noise Contours 2005
- FP, Farmland Preservation
- ARC, Agriculture Rural Conservation
- TI, Transitional Industrial
- I, Industrial
- R1
- R2
- B2, General Business
- B1, Village Business
- ES, Expressway Service
- O, Office
- AC, Airport Commerce
- Overlay A
- Overlay B
- Overlay C
- Centennial Park Overlay Zoning District*
* Includes Underlying Zoning Districts PUD 39, PUD 40, PUD 88 and B2

conditional rezone 2768 Orange Ave; 3/14/18

Planned Unit Development List

- 1-Eastmont Meadows - #2 of 1992, #6 of 1999
- 2-Golfview Office Park - #9 of 1999
- 3-Tammarron North - #10 of 1989, #9 of 1994
- 4-Fountain Estates - #4 of 1991
- 5-Timbers - #2 of 1991
- 6-Briarcliff Acres - #13 of 1993, #6 of 1998
- 7-Winsfield - #15 of 1992
- 8-Loral Pines - #9 of 1991
- 9-Old Elm - #24 of 1994
- 10-Highgrove - #23 of 1994
- 11-Timber Canyon Estates - #7 of 1991
- 12-Riverwood #10 of 1988
- 13-Cascade Lakes Plat #2 of 1996, #1 of 1997
- 14-Cascade Lakes - #10 of 1995, #10 of 1999
- 15-Watermark - #10 of 1997, #8 of 2003
- 16-Tall Pines - #16 of 1994
- 17-Quail Crest - #2 of 1983, #12 of 1995
- 18-Burton Pointe - #14 of 1990, #9 of 1996
- 19-Thornapple Centre - #3 of 1992, #1 of 2001
- 20-Cascade Christian Church - #15 of 1994
- 21-Grenelefe - #9 of 1985, #9 of 2000
- 22-Cascade East - 1978
- 23-Chatam Woods - 1972
- 24-MVP - #10 of 2006
- 25-Home Design Center - #6 of 1988, #3 of 1993
- 26-Spruce Meadows - #4 of 1994, #1 of 2007
- 27-Highridge - #4 of 1989, #16 of 2000
- 28-Patterson Ice Center - #10 of 1994
- 29-I-96 Office Park - #11 of 1984, #12 of 1987
- 30-Sports and Recreation - #4 of 1995
- 31-Burger King - 1981
- 32-Esplanade - #6 of 1986, #20 of 2000
- 33-Thornapple Land Company - 1979
- 34-Crestwood Hills - #4 of 1997
- 35-Summit - #11 of 1990, #5 of 1999
- 36-Noto - #13 of 1995
- 37-Kitchens By Stephanie - #13 of 1989
- 38-Northern Benefits - #15 of 1995
- 39-Centennial Park - 1973, #3 of 2013
- 40-Sunrise Senior Living - #12 of 2005
- 41-Glenwood Hills - #5 of 1986
- 42-Joseph Pacitti - #5 of 1987
- 43-Thornapple Estates - #9 of 1989, #7 of 1998
- 44-Heathmoor - #8 of 1991
- 45-Meadowood Trails - #5 of 1989, #9 of 1998
- 46-Groeters 36th St - #14 of 1992
- 47-Patterson 36th St - #8 of 1982
- 48-KCRC Facility - #7 of 1988
- 49-LeTourneau - #6 of 1989
- 50-Meadowbrooke Business Park - #2 of 1988, #10 of 2003
- 51-Ridgewood Creek - #2 of 1995
- 52-Buttrick Country Estates - #18 of 1990, #9 of 2001
- 53-Signature Inns - #15 of 1987
- 54-Ada Moorings - #13 of 2003
- 55-Sentinel Pointe - #6 of 1984, #1 of 2016
- 56-Open
- 57-Caravelle Village #7 - #17 of 1995
- 58-Thornapple Manor - #2 of 1998, #2 of 2004
- 59-Platinum Falls - #11 of 1998
- 60-Whitneyville Station - #1 of 1999
- 61-Quail Ridge - #7 of 1999
- 62-Thornapple Meadows - #8 of 1999
- 63-Hunter's Way - #10 of 2000, #1 of 2001
- 64-Laural Ridge - #14 of 2000
- 65-Sturbridge Estates - #6 of 2001
- 66-Bloomington Hills - #7 of 2001
- 67-East Imports - #1 of 2004, #6 of 2004, #9 of 2017
- 68-Caravelle Mixed Use - #2 of 2002, #16 of 2003
- 69-Meijer/Romano - #11 of 2002
- 70-Summerset - #12 of 2002
- 71-Betten Automotive - #16 of 2002
- 72-Clear Meadow - #3 of 2003
- 73-Park Place Condominium - #11 of 2003
- 74-Manchester Woods/ Stoneshire - #3 of 2004
- 75-Cascade Pointe - #4 of 2004
- 76-Waterfall Shoppes - #8 of 2004
- 77-Spees Realty - #10 of 2004
- 78-Glenwood Hills Office Park #3 - #9 of 2004
- 79-Cascade Engineering Corp Office - #14 of 2004
- 80-Riebel Development - #2 of 2005, #7 of 2017
- 81-YMCA - #7 of 2014
- 82-Kraft St Partners - #8 of 2005
- 83-Anderson Woods - #9 of 2005
- 84-Gatehouse
- 85-Burwood - #2 of 2006
- 86-Oak Harbor Preserve - #8 of 2017
- 87-Anderson Woods Phase II and III - #11 of 2006
- 88- Spees #3 of 2007
- 89-Sturbridge Valley - #4 of 2007
- 90-Sable Valley - #2 of 2013
- 91-Redwood - #6 of 2013
- 92-Drury Hotel - #12 of 2014
- 93-Thornapple Hilltop - #1 of 2015
- 94-Panera Bread - #2 of 2015
- 95-5905 Broadmoor - #3 of 2015
- 96-Leisure Living - #4 of 2017
- 97-Cascade One - #10 of 2017
- 97-Cascade One - #10 of 2017
- 98-The Lanterns #2 of 2019
- 99-Honeysuckle #4 of 2020

CITY OF KENTWOOD

LOWELL TOWNSHIP

CALEDONIA TOWNSHIP

4800 5600 6400 7200 8000 8800 9600

Sue Slater, Clerk

Date